

GROUND CONNECTORS

- C11000 electrolytic, unrecycled copper
- Cable from #6 AWG – 1000MCM
- Rod or Rebar from 3/8" – 1"
- Tin Plating available on all parts
- Pre-drilled inspection/weep hole
- IEEE & UL Qualified

CONNECTIONS THAT BREAK THE MOLD

Electrical utilities, wind and solar farms, large scale grounding projects and countless industrial projects around the world trust the tested strength and technology of the DMC Power Swage System.

Designed to meet and exceed the rigorous testing requirements of IEEE 837, our robust grounding connectors give your projects a lifetime of worry free connections and a permanent low-resistance path to ground, no matter the weather or soil conditions.

Discover the DMC Power Difference

• ULTIMATE PERFORMANCE

Made with C11000 copper and the ability to carry the equivalent current (or greater) of the conductor, our connectors have conductivity ratings at 101% IACS, ensuring your substation has the highest level of performance and reliability possible.

• FAST & CONVENIENT

All-weather operation reduces setup time and costly delays. Besides our tooling and connectors, no additional installation equipment, extra material, molds or shots are required.

• VERSATILE TOOLING

Depending on the O.D., the same Power Unit & Head Assembly used with our Grounding Connectors can also be used with our line of Cable Connectors.

• SAFE & RELIABLE

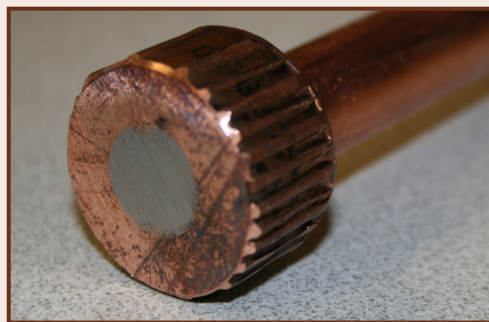
Push-button operation is simple, consistent and repeatable. Cold compression Swaging requires no special protective gear by eliminating heat, open flames and toxic fumes.

• INSTANTLY INSPECTABLE

Confirming Swage results couldn't be easier; our "Go/No-Go" Inspection Gauge measures the Swage instantly, leaving you more time to get the job done.



Handheld Swage Tools are compact, repeatable and easy to use in all conditions



360° compression reduces voids, allowing the fitting to run cooler

Can't Find What You Need?

Our connectors are available in a variety of sizes to fit most any situation, but when a custom solution is needed, turn to DMC Power. Our in-house team can design, test and manufacture connectors to fit any specification or use, all under one roof at our ISO 9001:2015 certified facility.



Current Cycle Test per IEEE 837-2014

GC910

1-HOLE OFFSET PAD TERMINAL

Pads
1"-2"

1 1/4" OD Weight
~1 lbs

Cu COPPER TIN-PLATING



ORDERING EXAMPLE

GC910B02GT

#2 AWG Barrel to 1", 1-Hole Offset Pad; Tin-Plated

GC920

2-HOLE OFFSET PAD TERMINAL

Pads
1"-2"

1 1/4" OD Weight
~1 1/4 lbs

Cu COPPER TIN-PLATING



ORDERING EXAMPLE

GC920B100T

1000 MCM Barrel to 2", 2-Hole Offset Pad; Tin-Plated

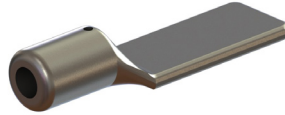
GC929

NO-HOLE OFFSET PAD TERMINAL

Pads
1"-2"

1 1/4" OD Weight
~1 1/4 lbs

Cu COPPER TIN-PLATING



ORDERING EXAMPLE

GC929B030T

300 MCM Barrel to 1-3/4", No-Hole Offset Pad; Tin-Plated

GC909

2-HOLE 90° PAD TERMINAL

Pads
2"

1 1/4" OD Weight
~1 1/4 lbs

Cu COPPER TIN-PLATING



ORDERING EXAMPLE

GC909B050

500 MCM Barrel to 2", 2-Hole 90° Pad

GC922

2-HOLE OFFSET PAD DUAL CABLE TERMINAL

Pads
1"-2"

1 1/4" OD Weight
~1 1/4 lbs

Cu COPPER TIN-PLATING



ORDERING EXAMPLE

GC922B004-004T

4/0 AWG Dual Cable Barrel to 1-3/4", 2-Hole Offset Pad; Tin-Plated

GC912

1-HOLE OFFSET PAD DUAL CABLE TERMINAL

Pads
1"-2"

1 1/4" OD Weight
~1 lbs

Cu COPPER TIN-PLATING



ORDERING EXAMPLE

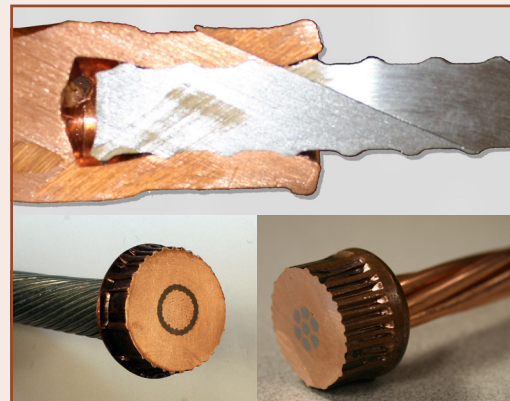
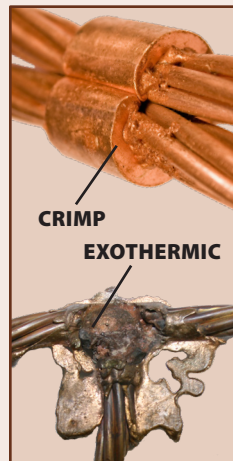
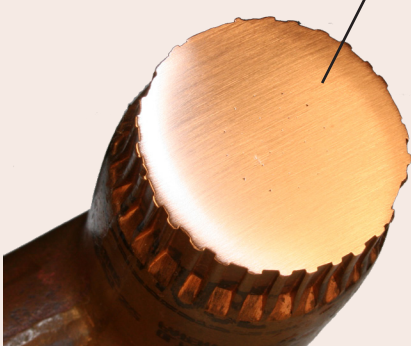
GC912B050-050T

500 MCM Dual Cable Barrel to 2", 1-Hole Offset Pad; Tin-Plated

WHY TAKE A CHANCE WITH CRITICAL UTILITY INFRASTRUCTURE?

SWAGED

Wire strands become cold-welded to the connector creating a superior connection without the heat!



SWAGE SYSTEM



GC733 SPLIT RUN TEE

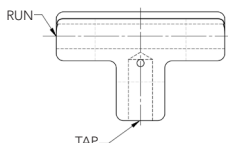
1 1/2" OD Weight
~1 1/2 lbs

Cu COPPER SPLIT TIN PLATING

ORDERING EXAMPLE

GC733B025-500

Tee with 250 MCM Split Run and 1/2" Ground Rod Tap



GC731 THRU RUN TEE

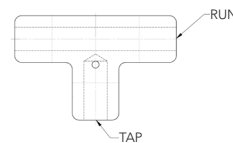
1 1/2" OD Weight
~1 1/2 lbs

Cu COPPER TIN PLATING

ORDERING EXAMPLE

GC731B002-025

Tee with 2/0 AWG Thru Run and 250 MCM Tap



GC741 THRU HOLE CROSS

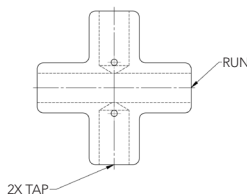
1 1/2" OD Weight
~2 lbs

Cu COPPER TIN PLATING

ORDERING EXAMPLE

GC741B025-002

Cross with 250 MCM Thru Run and two, 2/0 AWG Taps



GC742 OFFSET DUAL SPLIT CROSS

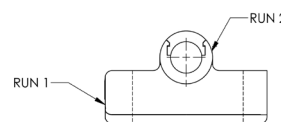
1 1/2" OD Weight
~2 lbs

Cu COPPER SPLIT TIN PLATING

ORDERING EXAMPLE

GC742B003-003

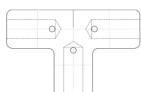
Offset Cross with 3/0 AWG and 3/0 AWG Split Runs



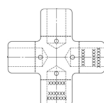
ALSO AVAILABLE:

Visit DMCPower.com to see additional Cross, Tee and Elbow connector styles.

GC730 3-TAP TEE



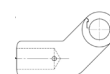
GC740 4 TAP CROSS



GC729 2-TAP ELBOW



GC743 OFFSET SPLIT RUN ELBOW



APPLICATION NOTES



SIMPLIFY YOUR GROUND GRID USING 3 CONNECTORS

DMC Power Grounding connectors can be used in a variety of ways beyond their intended purpose. In fact, many customers have completed their entire grid with only the 3 parts on the following page:



GC739 SPLIT RUN ELBOW

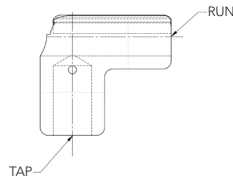
1 1/4" OD Weight
~1 1/4 lbs

Cu COPPER SPLIT TIN PLATING

ORDERING EXAMPLE

GC739B004-050

Elbow with 4/0 AWG Split Thru Run and 500 MCM Tap



GC736 THRU RUN ELBOW

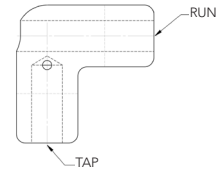
1 1/4" OD Weight
~1 1/4 lbs

Cu COPPER TIN PLATING

ORDERING EXAMPLE

GC736B02G-02G

Elbow with #2 AWG Thru Run and #2 AWG Tap



GC759 OFFSET DUAL SPLIT ELBOW

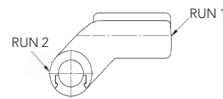
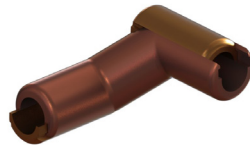
1 1/4" OD Weight
~1 1/4 lbs

Cu COPPER SPLIT TIN PLATING

ORDERING EXAMPLE

GC759B003-025

Offset Elbow with 3/0 AWG and 250 MCM Split Thru Runs



GC749 OFFSET SPLIT AND THRU RUN ELBOW

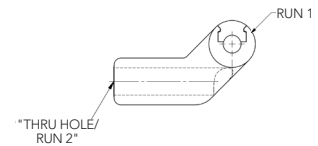
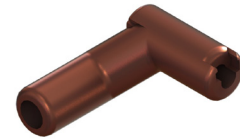
1 1/4" OD Weight
~1 1/4 lbs

Cu COPPER SPLIT TIN PLATING

ORDERING EXAMPLE

GC749B002-050

Offset Elbow with 2/0 AWG Split Thru Run and 500 MCM Thru Run



GC888 / GC721

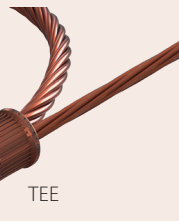
SPLIT
PARALLEL



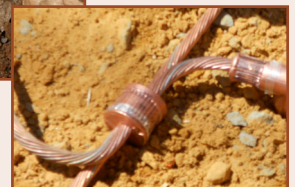
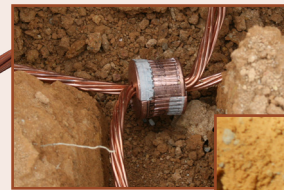
PARALLEL



CROSS



TEE



GC739 SPLIT ELBOW

ELBOW



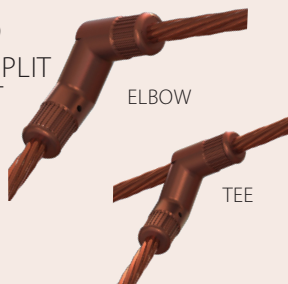
TEE



GROUND RODS

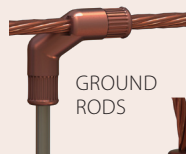
GC759

DUAL SPLIT
OFFSET
CROSS



ELBOW

TEE



GROUND RODS



RISER

OFFSET
SPLIT CROSS



GC721 SPLIT PARALLEL

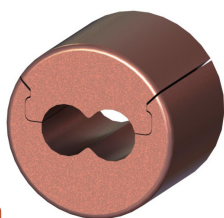
1 1/4" OD Weight
~1 1/4 lbs

Cu COPPER SPLIT TIN-PLATING

ORDERING EXAMPLE

GC721B025-025

250 MCM to 250 MCM
Split Parallel



GC888 REDUCED SPLIT PARALLEL

1 1/4" OD Weight
~1 1/4 lbs

Cu COPPER SPLIT TIN-PLATING

- Optimized design improves conductivity and performance while reducing material cost
- Solid web separation of conductors
- Single Swage installation
- Removable caps for easy installation
- Can be used as splice, tee, elbow or cross
- Fully tested and certified to all IEEE standards

ORDERING EXAMPLE

GC888B002-002

2/0 AWG to 2/0 AWG Reduced
Split Parallel



GC720 SPLICE

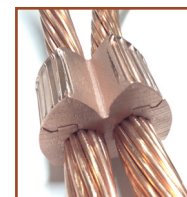
1 1/4" OD Weight
~1 1/4 lbs

Cu COPPER TIN-PLATING

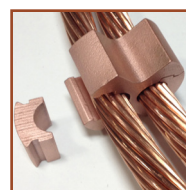
ORDERING EXAMPLE

GC720B025-500

250 MCM to 1/2" Steel
Rod Splice



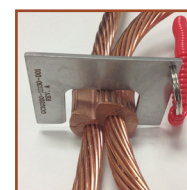
Separation
of Conductors



Removable Split
Caps



Single Swage
Installation



Instantly
Inspectable

APPLICATION NOTES



YOUR ONE STOP GROUND SOLUTION

DMC Power supplies all styles of high quality connectors needed to complete your grounding grid. With the push of a button on our lightweight tooling you can connect ground cables and rods in as little as 10 seconds. Trust the DMC Power Swage System for safe, repeatable, instantly inspectable and proven ground connections.

1. **GC920** – 2-Hole Terminal
2. **GC910** – 1-Hole Terminal
3. **GC740** – 4-Tap Cross
4. **GC729** – 2-Tap Elbow
5. **GC731** – Thru Run Tee
6. **GC721** – Split Parallel
7. **GC743** – Offset Split Elbow

8. **GC739** – Split Run Elbow
9. **GC759** – Offset Dual Split Elbow
10. **GC736** – Thru Run Elbow
11. **GC720** – Splice
12. **GC741** – Thru Run Cross
13. **GC730** – 3-Tap Tee

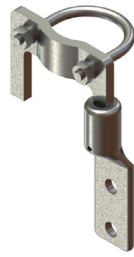
14. **GC746** – Alternate Thru Run Tee
15. **GC733** – Split Run Tee
16. **GC740** – 4-Tap Cross
17. **GC760** – Fence Post Connector
18. **GC888** – Reduced Split Parallel

GC765

FENCE POST CONNECTOR TO NEMA PAD

3" Weight
~3 lbs

Cu COPPER TIN-PLATING



ORDERING EXAMPLE

GC765B 32-000-920 T

2" Fence Post Bracket
to a Right Aligned
2-Hole NEMA Pad; Tin-Plated

Fence Post NPS Size
Left Side Terminal Type
Right Side Terminal Type
(000=None; 920=2-Hole;
910=1-Hole)
Tin Plating (Optional)

GC762

SWINGING GATE CONNECTOR

3" Weight
~5½ lbs

Cu COPPER TIN-PLATING



ORDERING EXAMPLE

GC762B24-64-002 D T

1-1/2" Swinging Gate Frame
to 4" Gate Post with
Dual 2/0 AWG Splices; Tin-Plated

Gate Frame NPS Size
Gate Post NPS Size
Splice Identifier Number
Connector Placement
(R=Right; L=Left; D=Dual)
Tin Plating (Optional)

GC760

FENCE POST CONNECTOR

3" Weight
~4 lbs

Cu COPPER TIN-PLATING



ORDERING EXAMPLE

GC760B 40-002-002 T

2-1/2" Fence Post Bracket
to Dual 1/0 AWG Splices

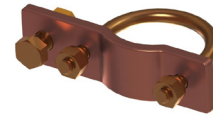
Fence Post NPS Size
Left Splice
Identifier Number
Right Splice
Identifier Number
Tin Plating (Optional)

GC761

FENCE POST CONNECTOR
WITH SLOTTED BOLT

3" Weight
~1½ lbs

Cu COPPER TIN-PLATING

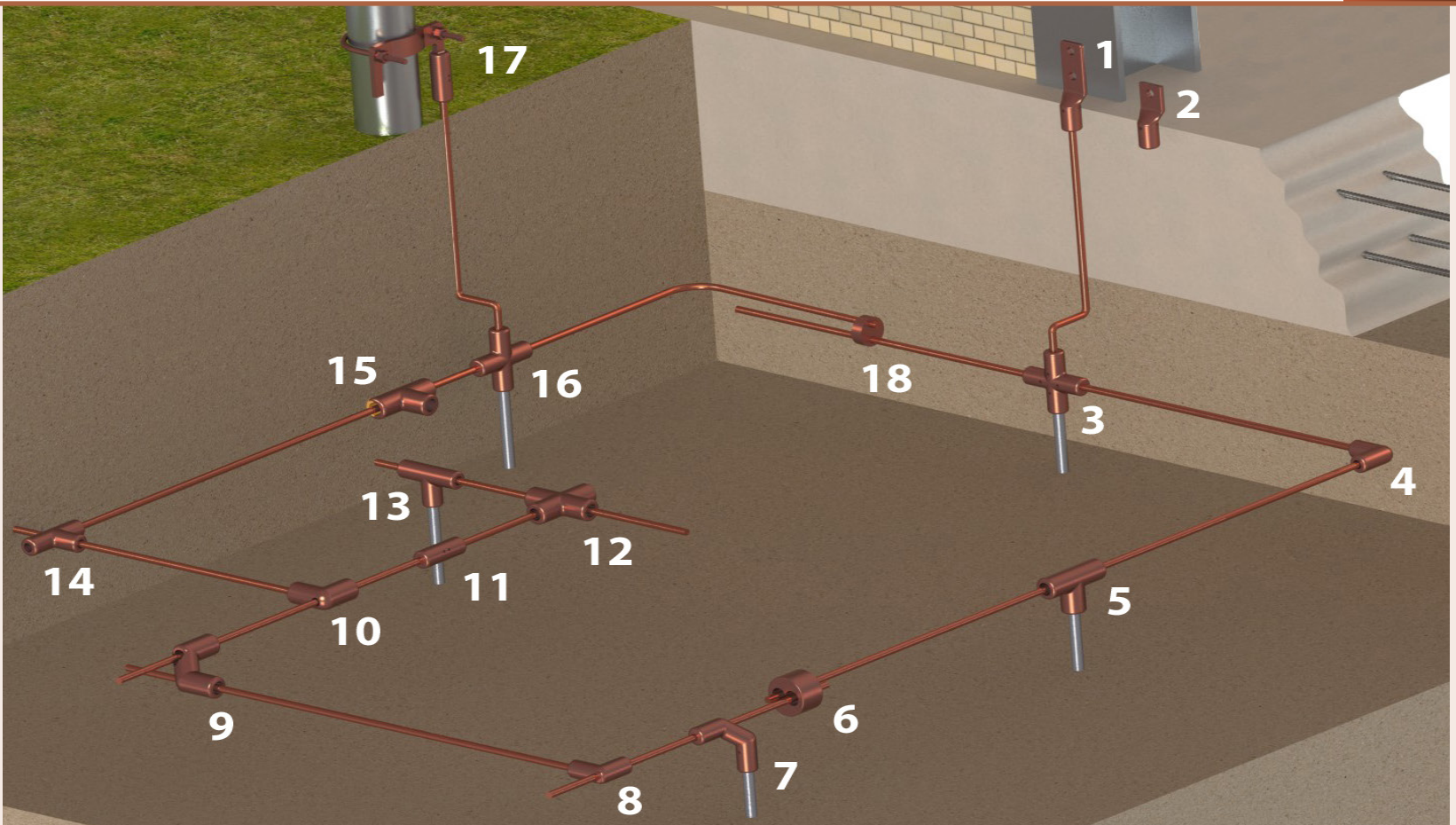


ORDERING EXAMPLE

GC761B 24-02G

1-1/2" Fence Post Bracket to #2 AWG Slotted Bolt

Fence Post NPS Size
Slotted Bolt Identifier
Number (02G; 04G)



GROUNDING CABLE AND ROD IDENTIFIER NUMBERS

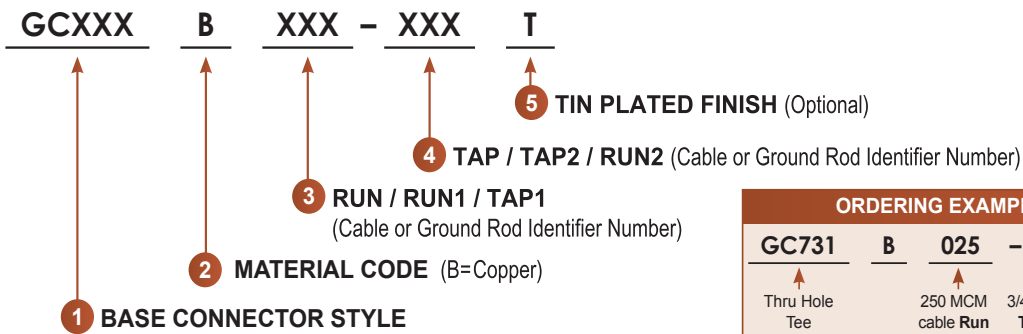
- Any combination of wire and/or rod connector is available
- The largest designator determines the part OD
- Consult DMC Power for Metric Rods and Rebar identifier code

Copper Cable (Ref. ASTM B8)					
Bare Stranded Copper Size (AWG/kcmil) <i>Solid Wire</i>	Dead Soft Annealed Copperweld (Stranding/AWG)	Bare Stranded Copper Size (mm2) SI/Metric	Connector Identifier Number	Connector O.D. (±.015)	
#6 AWG	1/#6	10.8 & 12.6	06G	1.25	1.00 for parallel
#4 AWG	1/#4 & 3/#10	14.1, 16, 17.8 & 19.6	04G		2.00 for parallel
#2 AWG	1/#2, 3/#8, 3/#9 & 7/#10	22, 25, 27.6, 29.2, 34.4 & 35	02G		
1/0 AWG	3/#5, 3/#6 & 3/#7	48.3 & 50	002		
2/0 AWG	7/#8 & 7/#9	70 & 74.9			
3/0 Solid Wire	7/#7 & 7/#6	83.6, 93.3 & 95			
3/0 AWG					
4/0 Solid Wire	7/#5	96.8, 116 & 120 (Compacted Wires)	004		
4/0 AWG	19/#9	120 & 134	025		
#4 AWG	1/#4 & 3/#10	14.1, 16, 17.8 & 19.6	04G	1.50	2.00 for parallel
#2 AWG	1/#2, 3/#8, 3/#9 & 7/#10	22, 25, 27.6, 29.2, 34.4 & 35	02G		2.25 to 2.75 for parallel
1/0 AWG	3/#5, 3/#6 & 3/#7	38.2, 48.3 & 50	002		
2/0 AWG	7/#8 & 7/#9	70 & 74.9			
3/0 Solid Wire	7/#7 & 7/#6	83.6, 93.3 & 95			
3/0 AWG					
4/0 Solid Wire	7/#5	96.8, 116 & 120 (Compacted Wires)	004		
250 MCM	19/#9	120 & 134	025		
300 MCM	19/#8	145.8, 146, 150 & 185 (Cmpctd Wires)	030		
350 MCM	-	181.6, 182 & 185	035		
400 MCM	19/#7	194 & 240 (Compacted Wires)	040		
450 MCM	-	-	045		
500 MCM	19/#6	240	050		
500ROPELAY	19/#5	300	053		
-	7/#4	-	500		
750 MCM	-	-	075	1.875	
1000 MCM	-	500	100		

Ground Rod				
Size	Material Type	Connector Identifier Number	Connector O.D. (±.015)	
3/8"	#3 Steel rebar	003	1.25	2.00 for parallel
1/2"	Copperclad-plain & sectional with 1/2" thread	025		
1/2"	Steel & copperclad sectional with 9/16" thread & #4 Steel rebar	500		
5/8"	Copperclad-plain & sectional with 5/8" thread	562		
5/8"	Steel plain & #5 Steel rebar	625		
3/4"	Copperclad-plain & sectional with 3/4" thread	682		
3/8"	#3 Steel rebar	003	1.50	2.25 for parallel
1/2"	Copperclad-plain & sectional with 1/2" thread	025		
1/2"	Steel & copperclad sectional with 9/16" thread & #4 Steel rebar	500		
5/8"	Copperclad-plain & sectional with 5/8" thread	030		
5/8"	Steel plain & #5 Steel rebar	035		
3/4"	Copperclad-plain & sectional with 3/4" thread	040		
3/4"	Steel plain	750		
1"	Copperclad-plain & sectional with 1" thread	914		
1"	Steel plain	950		

GROUND CONNECTOR ORDERING NOMENCLATURE

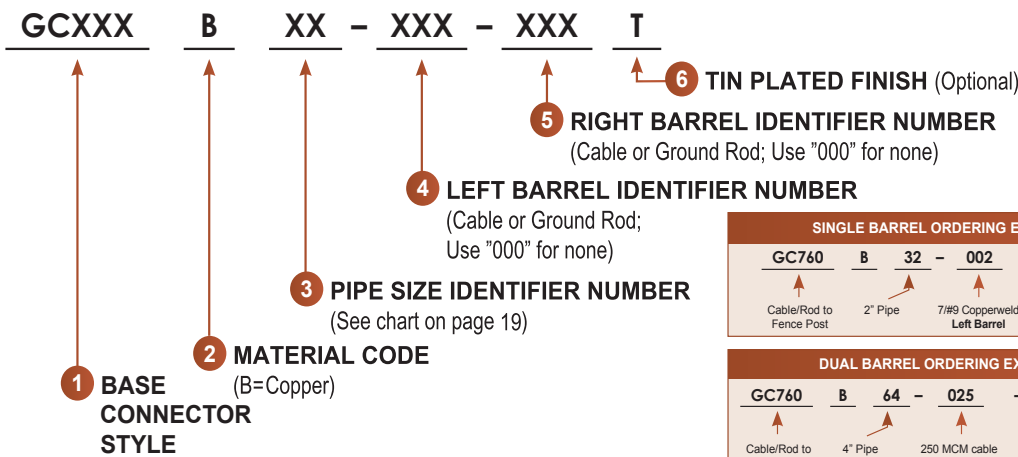
GROUNDING CONNECTORS



ORDERING EXAMPLE:

GC731	B	025	-	682T
Thru Hole Tee		250 MCM cable Run		3/4" Copperclad rod Tap; Tin Plating

FENCE POST CONNECTORS



SINGLE BARREL ORDERING EXAMPLE:

GC760	B	32	-	002	-	000T
Cable/Rod to Fence Post		2" Pipe		7/8" Copperweld Left Barrel		No Right Barrel; Tin Plating

DUAL BARREL ORDERING EXAMPLE:

GC760	B	64	-	025	-	030
Cable/Rod to Fence Post		4" Pipe		250 MCM cable Left Barrel		300 MCM cable Right Barrel; No Finish

TO FIND THE CORRECT TOOLING:

1. Select required connector

2. Use the chart on page 38 to determine the Connector Identifier Number and Connector O.D.
Use the larger O.D. for two different sized runs

3. Select the proper Head Assembly & Inspection Gauge based on the Connector O.D.

Connector Type	Connector Identifier #					Connector O.D.	Swage Tool Head Assembly	Inspection Gauge
Tee Splice Cross Elbow Terminal Fence Connector	02G	04G	06G	002	003	1.25	DLT45CLHA03975	GCIG200-03975
	004	025	500	562	625			
	025	500	682					
	02G	04G	002	003	004	1.50	DLT45CLHA05565	GCIG200-05565
	025	030	035	040	045			
	050	053	500	750	914			
Parallel	04G	06G				1.00	DLT45CLHA02500	DLT45CLIG02500
	02G					1.50	DLT45CLHA05565	GCIG200-05565
						1.875	DLT45CLHA08745	GCIG200-08745
	002	003	004	025	035	2.00	DLT45CLHA11130	GCIG200-11130
	500	562	600	625		2.25	DLT45CLHA15900	GCIC200-15900
	040	045	050	750	914			
	950							

*Exceptions exist for some cable size combinations; refer to individual model drawing to confirm tooling. DLT45- Head Assemblies use the DLT45MAPW0000 Power Unit